

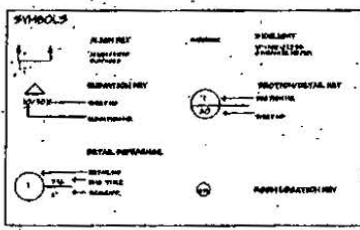
First floor

JANUARY 3, 1968  
RELEASED FOR  
MA DOR APPROVAL

Architects  
Studio One Inc.  
979 Main Street  
Springfield, MA

Client  
FRW CORP.  
Amherst MA

Tenant Plan for  
MASSACHUSETTS DOR  
to be located at  
115 State St  
Springfield, Massachusetts



**GENERAL DRAWING NOTES:**

1. SEE PLAN FOR NOTES.
2. ALL WORK SHALL BE IN ACCORDANCE WITH THE MASSACHUSETTS BUILDING CODE AS AMENDED.
3. ALL WORK SHALL BE IN ACCORDANCE WITH THE MASSACHUSETTS ELECTRICAL CODE AS AMENDED.
4. ALL WORK SHALL BE IN ACCORDANCE WITH THE MASSACHUSETTS MECHANICAL CODE AS AMENDED.
5. ALL WORK SHALL BE IN ACCORDANCE WITH THE MASSACHUSETTS PLUMBING CODE AS AMENDED.
6. ALL WORK SHALL BE IN ACCORDANCE WITH THE MASSACHUSETTS GAS CODE AS AMENDED.
7. ALL WORK SHALL BE IN ACCORDANCE WITH THE MASSACHUSETTS FIRE CODE AS AMENDED.
8. ALL WORK SHALL BE IN ACCORDANCE WITH THE MASSACHUSETTS HEALTH CODE AS AMENDED.
9. ALL WORK SHALL BE IN ACCORDANCE WITH THE MASSACHUSETTS SANITATION CODE AS AMENDED.
10. ALL WORK SHALL BE IN ACCORDANCE WITH THE MASSACHUSETTS SAFETY CODE AS AMENDED.

**DESIGN LOADS:**

DEAD LOADS: 10 PSF  
LIVE LOADS: 40 PSF  
WIND LOADS: AS PER CODE  
SEISMIC LOADS: AS PER CODE

**GENERAL NOTES:**

1. ALL WORK SHALL BE IN ACCORDANCE WITH THE MASSACHUSETTS BUILDING CODE AS AMENDED.

2. ALL WORK SHALL BE IN ACCORDANCE WITH THE MASSACHUSETTS ELECTRICAL CODE AS AMENDED.

3. ALL WORK SHALL BE IN ACCORDANCE WITH THE MASSACHUSETTS MECHANICAL CODE AS AMENDED.

4. ALL WORK SHALL BE IN ACCORDANCE WITH THE MASSACHUSETTS PLUMBING CODE AS AMENDED.

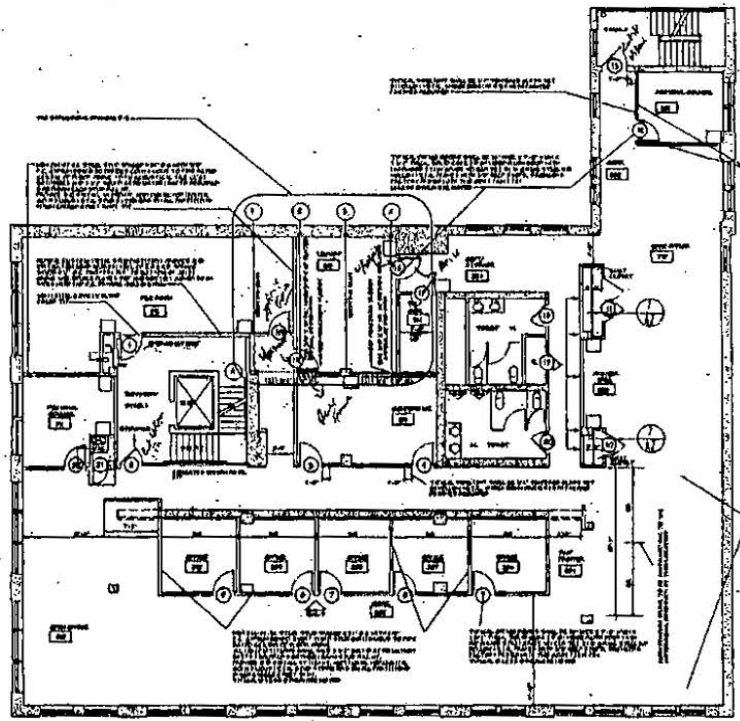
5. ALL WORK SHALL BE IN ACCORDANCE WITH THE MASSACHUSETTS GAS CODE AS AMENDED.

6. ALL WORK SHALL BE IN ACCORDANCE WITH THE MASSACHUSETTS FIRE CODE AS AMENDED.

7. ALL WORK SHALL BE IN ACCORDANCE WITH THE MASSACHUSETTS HEALTH CODE AS AMENDED.

8. ALL WORK SHALL BE IN ACCORDANCE WITH THE MASSACHUSETTS SANITATION CODE AS AMENDED.

9. ALL WORK SHALL BE IN ACCORDANCE WITH THE MASSACHUSETTS SAFETY CODE AS AMENDED.



**SECOND FLOOR PLAN  
LITIGATION**

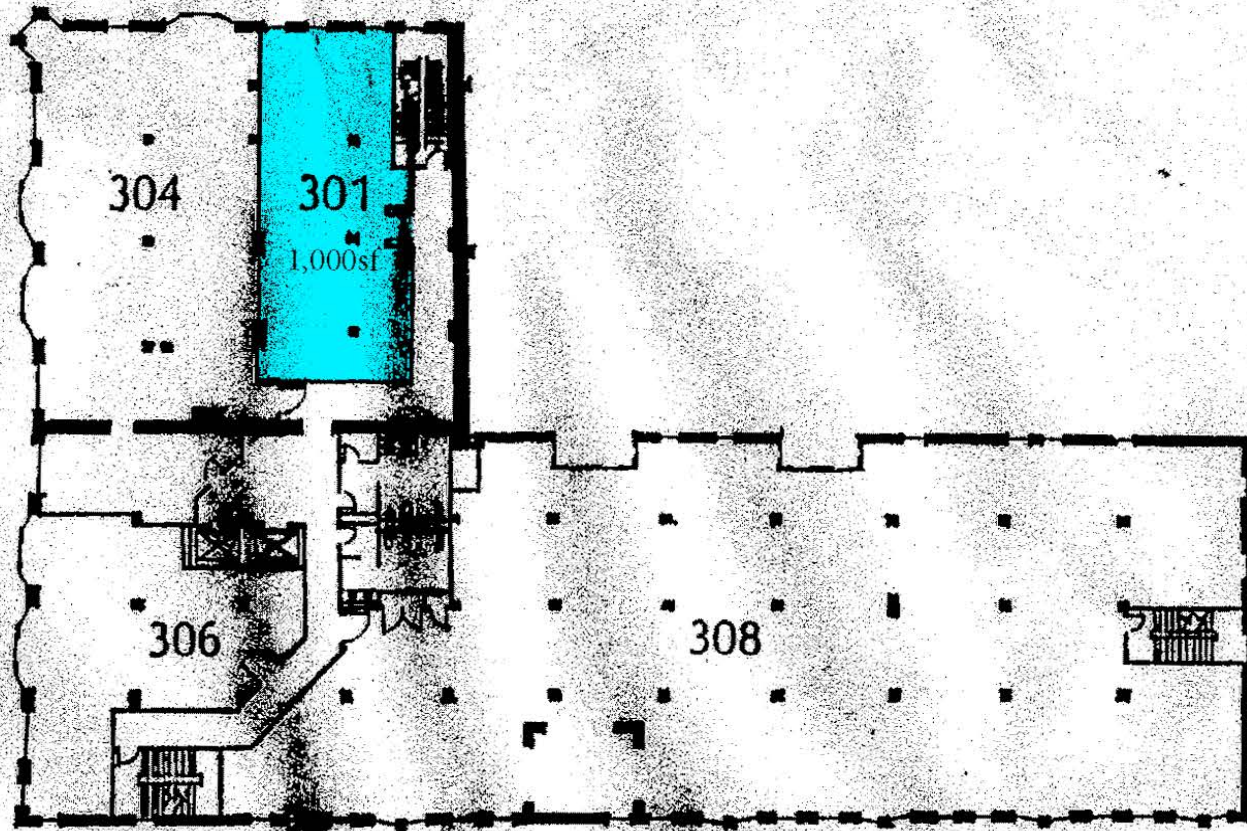
INDICATES EXISTING CONSTRUCTION  
 INDICATES PROPOSED CONSTRUCTION

SCALE 1/8"=1'-0"  
ALL CONSTRUCTION DOCUMENTS MUST BE APPROVED BY  
MASSACHUSETTS DOR PRIOR TO CONSTRUCTION

A-1

Macmillan and Son, Inc.  
1537 Main Street  
Springfield, Massachusetts





THIRD FLOOR